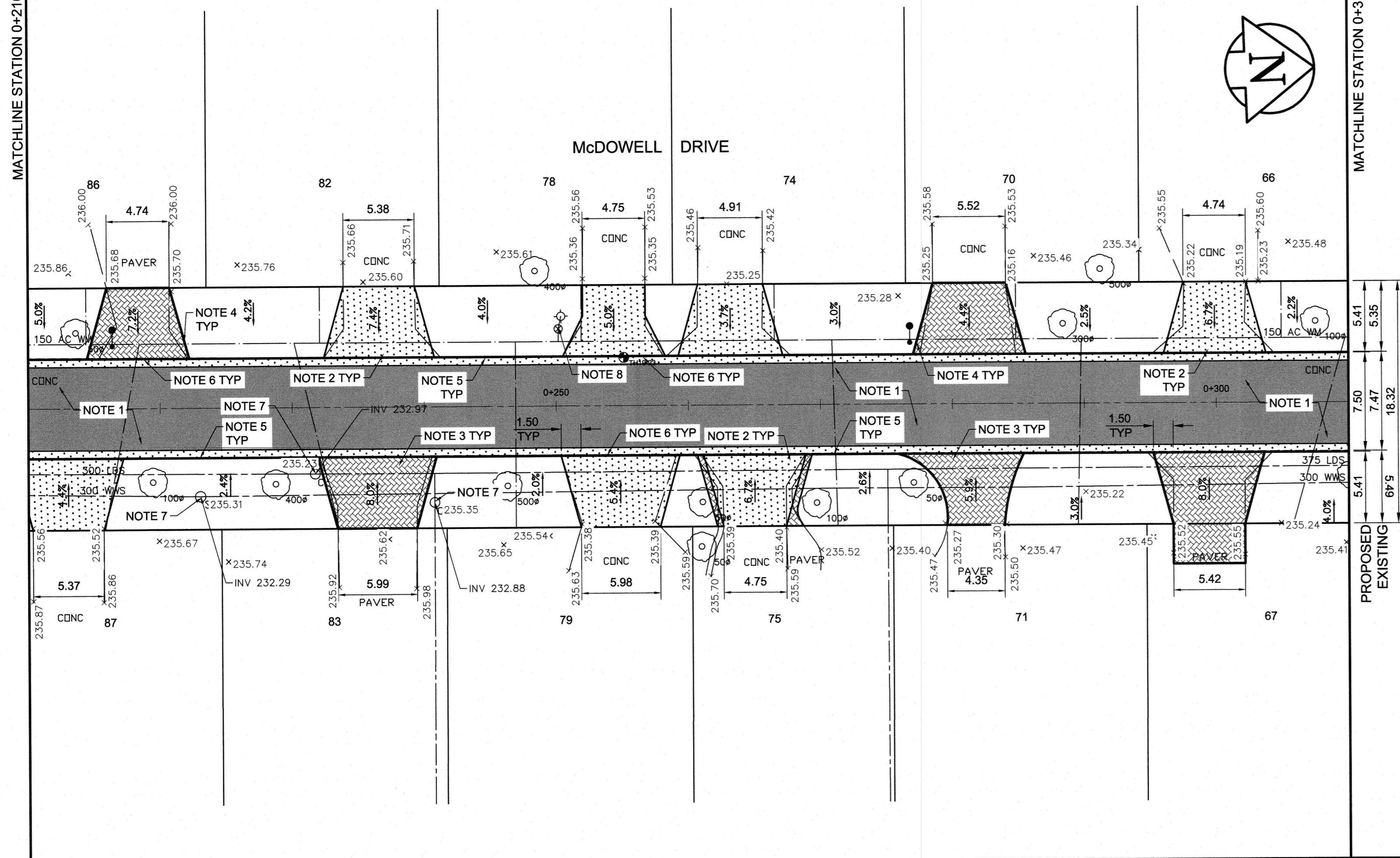


MATCHLINE STATION 0+210

MATCHLINE STATION 0+310



- REFERENCE NOTES**
- A. PAVEMENT DIMENSIONS ARE TO BACK OF CURB
 - B. BASELINE IS CENTRE LINE RIGHT-OF-WAY
 - C. PROPERTY LINES OBTAINED FROM CITY OF WINNIPEG L.B.I.S., AND NO SCALE FACTOR WAS APPLIED
 - D. REFER TO AECOM FIELD BOOK NO. 5038

- CONSTRUCTION NOTES**
1. REMOVE EXISTING CONCRETE AND ASPHALTIC PAVEMENT AND PLACE NEW ASPHALTIC PAVEMENT TYPE 1A (100mm)
 2. REMOVE EXISTING CONCRETE PAVEMENT AND CONSTRUCT NEW 150mm REINFORCED CONCRETE PAVEMENT
 3. REMOVE AND REINSTALL EXISTING PAVING STONES
 4. CONSTRUCT NEW BARRIER CURB
 5. CONSTRUCT NEW BARRIER CURB AND GUTTER (600mm WIDTH, 180mm HT.)
 6. CONSTRUCT NEW LIP CURB AND GUTTER (40mm HT. INTEGRAL)
 7. ADJUST EXISTING MANHOLE/CATCHBASIN TO GRADE
 8. ADJUST EXISTING WATER VALVE TO GRADE

AECOM
 Certificate of Authorization
 AECOM Canada Ltd.
 No. 4671 Date: Dec 6/19

METRIC
 WHOLE NUMBERS INDICATE MILLIMETRES
 DECIMALIZED NUMBERS INDICATE METRES

150 mm W.M.	WATERMAIN	150 mm W.M.	HYDRO	— X —	PROFILE
300mm L.D.S.	LAND DRAINAGE SEWER	300mm L.D.S.	CONCRETE	— □ —	WEST GUTTER
250mm W.W.S.	WASTEWATER SEWER	250mm W.W.S.	ASPHALT	— ○ —	EAST GUTTER
○	MANHOLE	●	PROPERTY LINE	— ◆ —	N/W PROPERTY LINE
□	CATCH BASIN	■	SURVEY BAR	— ○ —	S/E PROPERTY LINE
▽	CATCH PIT	▲	ELEVATION		
+	JUNCTIONS	+	TREE		
—	CULVERT	—	SIDEWALK RAMP		
—	GAS	—	CONCRETE SIDEWALK		
EXISTING	LEGEND - PLAN	PROPOSED	FENCE		
EXISTING	LEGEND - PLAN	PROPOSED	LEGEND - PROFILE	PROPOSED	

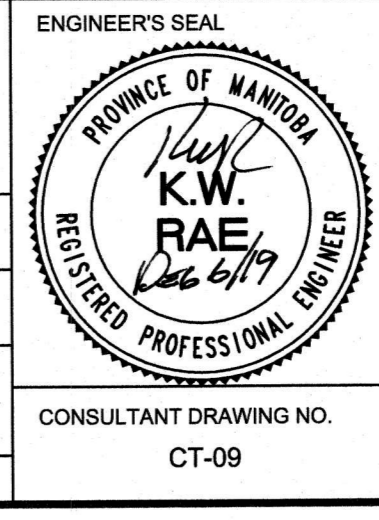
LOCATION APPROVED UNDERGROUND STRUCTURES

SUPV. U/G STRUCTURES COMMITTEE DATE

NOTE:
 LOCATION OF UNDERGROUND STRUCTURES AS SHOWN ARE BASED ON THE BEST INFORMATION AVAILABLE. BUT NO GUARANTEE IS GIVEN THAT ALL EXISTING UTILITIES ARE SHOWN OR THAT THE GIVEN LOCATIONS ARE EXACT. CONFIRMATION OF EXISTENCE AND EXACT LOCATION OF ALL SERVICES MUST BE OBTAINED FROM THE INDIVIDUAL UTILITIES BEFORE PROCEEDING WITH CONSTRUCTION.

B.M. 49-018	E. side Haney St., N. of Ridgewood Ave., Tblt. in ELEV. 235.910	N. Conc. foundation No. 863 Haney St., 1.0m E. of N.W. Cor. of house & 0.3m below stucco.
0	ISSUED FOR TENDER	12/08/2019 BC
A	ISSUED FOR REVIEW	04/04/2019 BC
NO.	REVISIONS	DATE BY DATE

AECOM		ENGINEER'S SEAL	
DESIGNED BY	SS	CHECKED BY	BC/KWR
DRAWN BY	SS	APPROVED BY	
HOR. SCALE:	1:250	RELEASED FOR CONSTRUCTION BY	
VERTICAL:	1:10	DATE	Dec 5/19
CONSULTANT DRAWING NO. CT-09			



THE CITY OF WINNIPEG
 PUBLIC WORKS DEPARTMENT
 ENGINEERING DIVISION

2019 LOCAL STREET RENEWAL PROGRAM

MCDOWELL DRIVE - WESTLUND WAY TO MCDOWELL DRIVE NORTH
 PAVEMENT RECONSTRUCTION
 STATION 0+210 TO STATION 0+310

CITY DRAWING NUMBER
 SHEET 09 OF 10